

# SUBURBAN WATER HEATERS FOR ALL RVS



## Quality you want now and down the road

The Suburban line of RV water heaters are the best on the road today! Their high recovery gas and gas-electric models come in sizes and with features to match the requirements of almost any RV. Its high tensile steel tanks are porcelain-lined and pressure tested twice during the manufacturing process, ensuring tank integrity and reliability. Automatic models in the Suburban range feature direct spark ignition with a remote switch that electronically controls the water heater from inside your RV - a simple convenience especially in poor weather conditions.

Don't allow your water heater to let you down whilst travelling, ask your RV Dealer to install a longer lasting, robust and intelligent Suburban RV water heater today!.

**WATERMARK CERTIFIED**

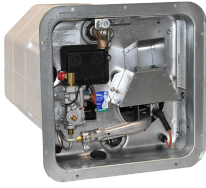


PROUDLY DISTRIBUTED IN  
A U S T R A L I A   A N D  
N E W   Z E A L A N D   B Y



# RELIABLE LONG LASTING WATER HEATERS FOR ALL RV'S

**SW6DRA Gas HWS**  
950-00026



(12v Ignition)

**SW6DERA Gas/Electric HWS**  
950-00036



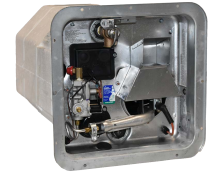
(12v Ignition/ 240v Element)

**SW5EA Electric HWS**  
950-00046



(240v Element Only)

**SW4DERA Gas/Electric HWS**  
950-00056



(12v Ignition/ 240v Element)

## FEATURES AT A GLANCE

### - Longer Life

Heated water attacks all metals, but not porcelain. That's why Suburban uses a porcelain-lined, steel water heater tank with an anode rod to "absorb" the electrolytic action - just like your water heater at home.

### - Faster Recovery

Fast recovery means more hot water and fewer cool water cycles. Suburban uses a copolymer insulation jacket specially moulded to fit the tank which does a better job of retaining heat than some other models.

### - More Convenience

All Suburban water heaters are designed for easy installation, operation and maintenance. The limit switch, reset button and on/off electric element rocker switch are conveniently located in a housing behind the removable outer door. The electric heat element and combination drain plug/anode rod are also located there.

### - Regulation Compliant

Suburban Water Heaters carry the following approvals:  
WaterMark certification  
Regulatory Compliance Mark (RCM)  
Australia and New Zealand Gas Safety Certification



## SUBURBAN ANODE RODS

### 950-01140

The anode equalizes aggressive water reaction, providing cathodic protection for the tank. It is a very important factor in tank life and should only be removed for inspection, draining or replacement. Suburban Anode rods are made for the 4, 5 and 6 gallon tanks.

*\* Please be aware that some imitation anode rods can cause damage to your Suburban HWS. Coast recommends using Suburban Anode Rods in Suburban HWS.*



SPECIFICATIONS	Model – SW6DRA	Model – SW6DERA	Model – SW5EA	Model – SW4DERA
CAPACITY	20.3L	20.3L	17.7L	15.1L
MAXIMUM WORKING PRESSURE	700kPa	700kPa	700Kpa	700kPa
HOURLY GAS CONSUMPTION	8.7 mj/hour	8.7 mj/hour	-	8.7 mj/hour
TEST POINT PRESSURE	2.63Kpa	2.63Kpa	-	2.63Kpa
JET ORIFICE SIZE	0.84mm	0.84mm	-	0.84mm
TYPE OF HEATING MEDIUM	Universal Gas	Universal Gas/240V	240Volt	Universal Gas/240V
RECOVERY	40L/hr 45°C rise	40L/hr 45°C rise	21L/hr 45°C rise	40L/hr 45°C rise
<b>ELECTRICAL</b>				
- FOR AUTOMATIC GAS IGNITOR	-	12Volt D.C.	-	12Volt D.C
- 240 VOLT HEATING ELEMENT	-	240Volt – 50HZ A.C.	240Volt – 50HZ A.C.	240Volt – 50Hz A.C.
- ELEMENT RATING	-	1440 Watts – 6 Amp	1440 Watts – 6 Amp	1440 Watts – 6 Amp
WIDTH	320mm	320mm	320mm	320mm
HEIGHT	320mm	320mm	320mm	320mm
DEPTH	500mm	500mm	450mm	450mm

All specifications may be subject to change without notice.

For technical assistance on all Suburban Water Heater models please email : [technical@coastrv.com.au](mailto:technical@coastrv.com.au)



**Coast to Coast**  
CARAVAN & LEISURE

[www.coastrv.com.au](http://www.coastrv.com.au) | [www.coastrv.co.nz](http://www.coastrv.co.nz)

Email: **NSW:** [salesnsw@coastrv.com.au](mailto:salesnsw@coastrv.com.au) **WA:** [saleswa@coastrv.com.au](mailto:saleswa@coastrv.com.au)

**QLD:** [salesqld@coastrv.com.au](mailto:salesqld@coastrv.com.au) **VIC:** [salesvic@coastrv.com.au](mailto:salesvic@coastrv.com.au)

**NZ:** [enquiry@coastrv.co.nz](mailto:enquiry@coastrv.co.nz)

DEALER / SUPPLIER